

# how to apply

## TIP!

**Your design may have creases from shipping. This will not harm or affect your vinyl designs.**

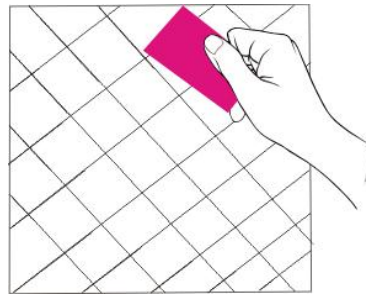
### SURFACE PREP

Before you begin make sure there is no oil or dirt on your wall/surface or your design will not stick! Use a dry lint free cloth. For more stubborn dirt use only water, however wait 24 hours before installing your design after water has been applied to your surface. If your wall is newly painted, wait at least 2 weeks before you apply your decal or it may not adhere.



### DESIGN PREP

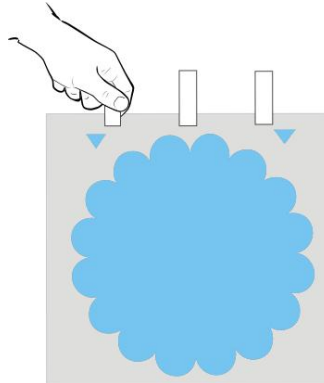
Place your design on a clean hard surface so that the backing paper (with the grid) is facing you and you are unable to see the design. Using your application card, burnish (rub) firmly on the backing several times to help the vinyl adhere to the front layer.



### DESIGN PLACEMENT

Decide where you would like to place your design onto your surface. Move design around until it is generally where you would like it to go.

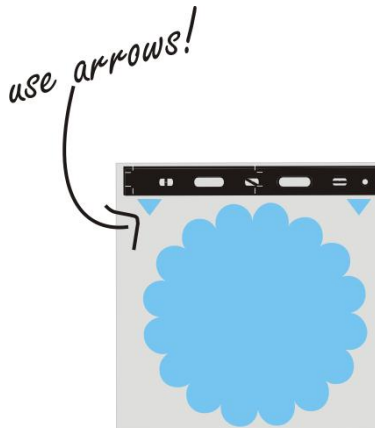
Using blue painters or masking tape, place strips of tape along the top to hold your design in place. Make sure to use a sufficient amount of tape to secure and anchor your design. The tape will act as a hinge.



### STRAIGHT ALIGNMENT

To ensure that your design is straight, align a level across top of the arrows on your design. Adjust your tape until your design is straight according to your arrows.

If you do not have a level, use a ruler to measure from the ceiling or a reference point above your design to your arrows.



### **Important!**

Use the arrows, not the top of the application paper for a straight edge reference.

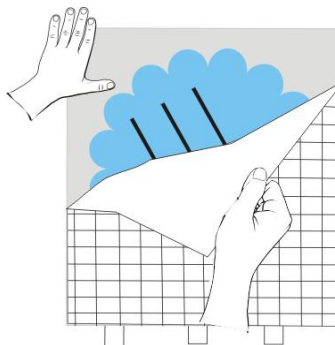
### **REMOVE BACKING PAPER**

Flip your design up so that it is flat against your surface and the backing paper is facing you.

### **Important!**

Your tape is your anchor, if your tape isn't secure after flipping it up and is starting to release from your surface, go back and secure before continuing.

Carefully and slowly peel the backing layer away at a 45 degree angle. Very slowly, roll it off at an angle along the surface, doing a wiggle pull motion; pull the backing paper away from the vinyl. If at any time the vinyl does not want to come off the backing paper, push down the paper again in that spot, then push with your finger and try pulling again. For more stubborn spots, help start the transfer by lifting the edge with your fingernail.



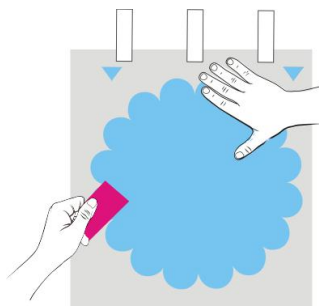
### **Important!**

Do not touch the vinyl's sticky side with your hands. The oil in your hands will prevent it from sticking.

### **APPLYING THE WALL DECAL**

Your hinge is there to help anchor your vinyl in place. (like an extra pair of hands!) With your hands, starting from the top and moving downward, gently smooth the vinyl onto your surface.

Next, using your application tool and working from the center out, rub over top of the vinyl design to help it adhere to the surface.

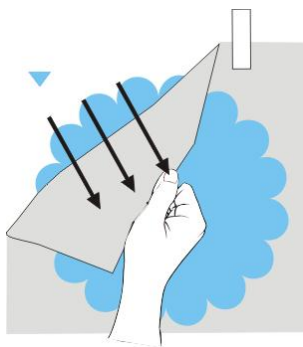


### **REMOVING TRANSFER TAPE**

Starting from the top of the design, and using a slow, wiggle pulling motion, pull the top layer (the transfer tape) off at a 45 degree angle. Do not lift straight up.

### **Important!**

We use a paper transfer tape (top layer) for your convenience. This layer needs to be removed or you will not have the professional hand painted look.



### For Stubborn Release:

- Using more pressure, hold down the vinyl design with your finger against your surface as you pull off the top layer.
- Work with smaller pieces after peeling away part of the top layer and cut away at the excess.
- Run a hair blower on low heat across the design for a few seconds to heat up the adhesive allowing the vinyl to be easier to work with.
- If you are having difficulty getting your design to release from the transfer tape, moisten a sponge and use it to dampen the **back of the tape (not the sticky side)**. This will help the design release from the tape. As you remove the transfer tape, press the design on the wall with your thumb or a dry cloth.

### MULTIPLE COLOR APPLICATION

When applying more than one color, use the Hinge Method and Arrows for each piece. The arrows on each piece match up with each other for perfect alignment.

